



Södertälje
kommun

Our Södertälje

A MAGAZINE ABOUT THE MUNICIPALITY OF SÖDERTÄLJE – 2017 EDITION



IN
ENGLISH





Photos: Pontus Öre



■ CONTENT



Experience Södertälje



Municipality of Södertälje



Schools and education



Exercise and health



The business sector



Focus on housing

Our Södertälje is an information magazine from the Municipality of Södertälje. This special edition is a short version of the full Our Södertälje, and it is translated into English, Finnish and Arabic. **Cover photo:** Pontus Orre. **Printing:** Komtryck 2017. **Contact:** Municipality of Södertälje, SE-151 89 Södertälje, Sweden, Tel. +46 8-523 010 00, info@sodertalje.se, www.sodertalje.se.

WELCOME TO Södertälje!

Södertälje, a city of contrasts and opportunities. This is how I would choose to describe the place you have chosen to call home; because Södertälje is very much a city of contrasts. It is a place like few others. A place where fresh water meets salt water, town meets country, sport and outdoor life meet education and industry. Södertälje is a place where you have the chance to grow up with opportunities and to age with dignity.

Here in Södertälje we give high priority to provision for children and young people, both at school and during leisure time. We really do have something for everyone, irrespective of whether you are a committed athlete, a budding engineer or an opera buff. We have an extensive range of clubs and societies, helping to keep our city thriving and our residents active. Over the following pages you can read all about what makes the Municipality of Södertälje the wonderful place it is.



© Sam Murad

Södertälje is a municipality that has strong ties with the world beyond Sweden's borders. Development of the export markets, involvement on other continents, elite athletes who went to school here, the traffic that passes up and down the canal, along the motorways and railway and through the port, and our special culinary culture – all are interlinked with the world beyond the southern tip of Mörkö.

No matter whether you are here to study at our campus or have chosen to settle nearby, I would like to welcome you to my home – and yours: Södertälje. I hope you enjoy the magazine!

Boel Godner,
Chairman of the Municipal Board

THE MUNICIPALITY OF SÖDERTÄLJE ON SOCIAL MEDIA

The Municipality of Södertälje uses social media to communicate information to residents and to promote a sense of pride in all the good things going on in and around Södertälje. At the time of printing this brochure, our municipal Facebook account, for instance, had just over 7,800 followers.

Follow us on social media to read information, view pictures, watch videos and more!

We have accounts on Facebook, Twitter, Instagram, YouTube and LinkedIn. A number of municipal operations, such as the library, Torekällberget open-air museum and Kulturskolan have their own social media accounts.

View the various accounts under:

► sodertalje.se/press

Södertälje Information Office – the meeting place in Södertälje

Visit Södertälje Information Office for help finding out about pretty much anything in the Municipality of Södertälje. You can also discover clubs and societies and companies, who showcase their activities or interesting projects here.

Södertälje Information Office is for residents, students, visitors and anyone passing through Södertälje. Clubs and societies and companies in the municipality can now showcase their activities on the premises and hold theme days, workshops and exhibitions linked to Södertälje.

The Information Office team can give you tips about sights and attractions, places to stay, things to see and do, activities, and cultural and sporting events. You can also obtain tickets and local maps and get up-to-date tips for seasonal activities.

Aljoša Lagumdžija, who is Head of Södertälje Information Office, explains:

– Traditional tourist information office activities have become increasingly digital, and more people are booking, buying and finding information online. We realised that we needed to adapt our activities in order to meet new needs, and we have developed the tourist office into Södertälje's new meeting place.

A meeting place for residents, associations and companies

The 'Smaka på Södertälje' food festival



attracted 500 visitors over several hours and has been the best-attended event since the tourist information office became a meeting place for everyone in Södertälje. Local companies showcased locally-produced food and visitors got the chance to sample products and a variety of dishes. The 91:an Karlsson exhibition featured original drawings by the creator of the comic strip, who lived in Ytterenhörna, and was a joint event with comic company Egmont and well-known illustrators who draw 91:an Karlsson today. Other activities over the past year have included 'Slöjda i Södertälje', 'Studera i Södertälje' and 'Kringlor i Södertälje'.

The shop at Saltsjögatan 1 has a stage and soundbar for presentations and talks, marketing areas, digital screens and Wi-Fi on the premises and in the square, and a conference room for corporate visits. Interested in presenting your business? Then call +46 8-523 060 30 to find out more.

An attractive and accessible place

The change of emphasis for Södertälje Information Office has been a success. Our meeting place for everyone in Södertälje is a place where we want to involve people from all walks of life in new interactions and collaboration. The objective is to dis-



© Pontus Orre



södertäljebyrå

Welcome to Södertälje Information Office!

Södertälje Information Office – tourist information, meeting place and service centre.

- › Saltsjögatan 1, 151 71 Södertälje
- › 08-523 060 30
- › turist@sodertalje.se
- › destinationsodertalje.se

seminate knowledge, promote dialogue and strengthen the development of Södertälje. Our goal is to become a more attractive and accessible place, providing a broader range of services to a bigger target group, all year round. Through willingness to experiment, Södertälje Information Office has come up with a successful new approach, owing to the effects of digitalisation, and this new method has spread to municipalities throughout Sweden.

– Other municipalities have got in touch and shown interest in what we are doing here in Södertälje, and many have come here for study visits. It's great to be a pioneer and have a chance to show off how we operate here in Södertälje, at fairs and conferences and for individual study visits from municipalities and political parties who also need to make changes to their tourist information offices.

What's happening in Södertälje?

There is always something happening in Södertälje. Concerts, theatrical performances, art exhibitions, sports events, films, walking tours of the city, author evenings and lectures. The new diary of events lists most events and activities. Would you like to share details of your event or activity? Go to:

- › destinationsodertalje.se/sv/evenemang

DESTINATION SÖDERTÄLJE

The task of Destination Södertälje is to strengthen the business sector in Södertälje and to increase the attractiveness of Södertälje as a location. Together with other players we want to make Södertälje even better, somewhere with scope to develop and implement ideas. We want to highlight the variety of opportunities available to business owners, students and visitors and also show that Södertälje is an attractive place to live and work.

Want to get in touch with us about a business matter?

You will find our business portal at www.sodertalje.se, where we bring together all information relating to business activities and information about what is going on in the business sector.

- › naringsliv@sodertalje.se
- › sodertalje.se/foretagande

Want to get in touch with us about our local brand?

On Destination Södertälje's website you will find inspiration and information about everything that is happening in Södertälje. You will also find information about the Södertälje brand and how you can be a part of it.

- › destination@sodertalje.se
- › destinationsodertalje.se



TOP VISITOR ATTRACTIONS AND ACTIVITIES

What are visitors to the tourist office in Södertälje typically looking for? What do they want to see and experience? Head of Södertälje Information Office Aljoša Lagumdžija has listed some activities and destinations that are well known, along with a few that are not so well known but still well worth a visit:

TOM TITS EXPERIMENT

■ One of the biggest science centres in Sweden, for visitors of all ages. Visitors can explore science through a wide variety of interactive displays. Educational and popular with everyone.

- Storgatan 33, 08-550 225 00
 - tomtit.se
-

THE BEACH

■ The Beach is one of the world's foremost indoor venues for beach volleyball. The Beach offers fun tournaments, parties, kick-offs, basic courses, group training sessions and league matches for both individuals and corporate groups. 23 degrees all year round.

- The Beach, Hansavägen 10, 08-121 346 66
 - thebeach.se
-

YTTERJÄRNA

■ Ytterjärna offers a rural idyll, tranquillity and harmony. The arts centre (Kulturhuset) in Ytterjärna features artists and shows alongside organic and locally-produced food served in its café and restaurant. Hike along the ECO trail and learn about how organic farming works in practice. Ytterjärna is a centre for anthroposophists and attracts visitors from across Sweden and Europe.

- Ytterjärna, Järna, 08-554 302 00
 - kulturhuset.nu
-

SYDPOOLEN

■ Sydpoolen's leisure pool is an experience for all those who enjoy aquatic activities. It's the only pool in Greater Stockholm with rushing waves, water chutes, a river channel, bubble bed, water cannons, jacuzzi and aquatic toys. For the very young, there is Pigges Lagun – a mini leisure pool, and the main pool also has a large jacuzzi.

- Sydpolen Actic, Östra Kanalgatan 2, 08-554 428 0
-

TULLGARN'S SLOTT

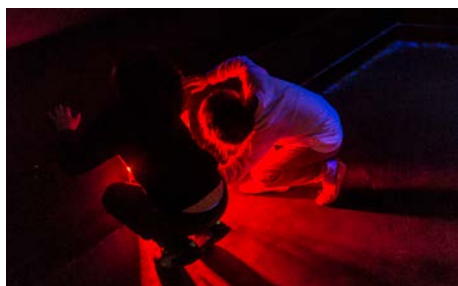
■ Tullgarn Royal Palace offers daily guided tours from May to September and also hosts occasional special exhibitions. The palace has a special history and is still visited by the royal family. The estate is also home to an inn with overnight accommodation, a café, a large garden and a large castle park.

- Tullgarns slott, Vagnhärad, 08-551 720 11
 - kungahuset.se/besokkungligaslotten/tullgarnsslott
-

WENDELA HEBBES HUS

■ Museum and restaurant highlighting the Hebbe family. Wendela Hebbe was Sweden's first female journalist.

- hebbevillan.se
-



TOM TITS EXPERIMENT



SYDPOOLEN



THE BEACH



TULLGARNS SLOTT



YTTERJÄRNA



WENDELA HEBBES HUS



VISITOR MAP

■ Need to find your way around and locate the various visitor attractions and places to stay in the municipality? Collect a visitor map from Södertälje Information Office.
 > destinationsoderalje.se



Illustration: Karl Modén

WOULD YOU LIKE TO JOIN US?

■ More than 300. That is how many different types of posts there are in the Municipality of Södertälje. You probably already know that municipalities employ teachers, auxiliary nurses and social workers. However, did you know that we also employ architects, lawyers and stage technicians? Right now, we are specifically looking for social workers, teachers and engineers.

Are you ready for Södertälje? Visit:

› sodertalje.se/ledigajobb

Latest news about jobs and more on social media!

We use social media to post exciting updates from our activities, as well as details of job vacancies. Follow us on Facebook and LinkedIn!

› **Facebook:**

Working for the Municipality of Södertälje
(facebook.com/jobbaisodertalje)

› **LinkedIn:**

Municipality of Södertälje
(linkedin.com/company/sodertalje-kommun)

What does a municipality do?

Have you ever wondered who makes decisions and how municipal activities are implemented in your municipality? And who is in charge? This text explains how things are organised in the Municipality of Södertälje and what scope you have for influence and insight into its activities.

The Municipality of Södertälje aims to provide services for everyone living and working here. The municipality handles and is responsible for many things that you as a resident need. Among other things, the municipality ensures provision of schools and pre-schools for children and somewhere for the elderly and the sick to receive care and assistance when they can't look after themselves.

The municipality also makes sure that waste is collected, water is supplied to your taps and the roads are fit for driving, and plans construction and cultural initiatives. In short, municipal operations safeguard local well-being.

Who makes decisions about the municipality?

The parliament and government set the frameworks for municipal operations. The state has transferred more and more functions to the municipalities and today Swedish municipalities are unique in the world in terms of their broad sphere of activities, in comparison with other countries where much of what municipalities do rests with the state or the county. Sweden has a Local Government Act that governs which activi-

ties are mandatory for municipalities and which can be managed voluntarily.

A municipality can independently, within certain limits, freely decide which voluntary activities it will handle, and is entitled to charge fees for this. Municipal self-government is connected with democracy and citizens' capacity to influence municipal decisions and demand that politicians take responsibility. When any local resident comes into contact with the Municipality of Södertälje's operations they should feel that they have the same opportunities, rights and obligations as all other residents.

How is a municipality run?

An efficient organisation is needed to take on responsibility for the municipality. The Municipality of Södertälje is run by the politicians elected by the citizens. You and everyone else who is entitled to vote in Södertälje jointly decides who is to run the municipality when you vote in the municipal elections. The Municipality of Södertälje comprises a large organisation, including both administration departments and companies employing almost 7,000 people.



MANDATORY FUNCTIONS FOR THE MUNICIPALITY OF SÖDERTÄLJE:

- › Child care
- › Schools and adult education plus Swedish for Immigrants (SFI)
- › Social welfare (for the elderly and persons with disabilities plus individual and family welfare)
- › Planning and building issues
- › Environmental and health protection
- › Housing
- › Water and drainage systems
- › Street-cleaning and waste management
- › Emergency services
- › Civil defence
- › Library services

VOLUNTARY FUNCTIONS FOR THE MUNICIPALITY OF SÖDERTÄLJE:

- › Recreational and cultural activities
- › Music and arts schools
- › Reception of refugees
- › Consumer advice
- › Park maintenance
- › Forest and nature conservation

The big decisions

Elected politicians gain seats on the municipal council, which then appoints the Municipal Board. The Municipal Board manages and coordinates all the work and bears responsibility for the municipality's finances.

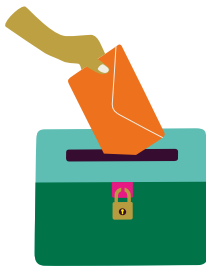
The big overall decisions are made by the municipal council, for example, budget and how much tax residents must pay. The municipal council meets ten times a year, and all meetings are open to anyone who wants to observe them.

The municipal council decides what committees are to be set up and elects the members. Examples of committees in the Municipality of Södertälje include the environment committee, the social welfare committee and the culture and recreation committee. The committees are responsible for the day-to-day work within the municipality, they prepare the matters the council must discuss and decide on and implement the decisions made by the councillors. Civil servants in the various offices carry out the everyday work. This may include issuing building permits, granting financial assistance or organising care for the elderly.

Who makes sure that things are done right?

Selected auditors review the operations of the Municipality of Södertälje, comprising committees, boards, municipal companies and individual members. This review involves the auditors examining whether the operations live up to the council's objectives, whether decisions, legislation and regulations are complied with and whether the financial reporting is correct.

As a local resident you can also appeal against municipal decisions, for example, decisions made by the council. The future of Södertälje is determined by you and all other local residents by voting and electing politicians in the municipal elections. And you can also have an influence and submit suggestions between elections in a variety of ways.



HOW YOU CAN HAVE AN INFLUENCE

In addition to electing representatives to the municipal council every four years, you can influence the activities of the municipality in other ways at any time.

Civic participation

Make your voice heard! Everyone is allowed to submit questions and suggestions to the municipal council. There is a special form for you to fill in and send to the municipality. You can find the form at:

sodertalje.se/medborgarforslag

Give us your opinion

Views, opinions, praise and complaints give us the opportunity to find out what you as citizens think and what we can improve.

To tell us your views on our activities, visit:

sodertalje.se/synpunkt

Ask the municipality

You can put questions directly to politicians and civil servants in the municipality by phone, letter or e-mail.

Request public documents

If you would like to study a municipal issue in depth – a report on the canteen at your children's school or your neighbour's planning permission, for example – you are entitled to contact the municipality for access to the relevant documents.

Referendum

You are entitled to request a referendum about a specific municipal issue. All you need to do is to collect the names, addresses and signatures of 6,300 people (10 percent of the electorate) in Södertälje.

Become politically active

You are entitled to stand for election to the municipal council by becoming an active member of a political party – or by starting a new party of your own.

Municipal meetings

Anyone is welcome to observe and listen to municipal council meetings, which are also broadcast live online at:

sodertalje.se/webb-tv.

You can also read the minutes of the meeting afterwards. For information about when the committees meet, visit:

sodertalje.se/namnder.

Disabilities Council

The Disabilities Council is an advisory body dealing with issues concerning people with disabilities. The council is subordinate to the Municipal Board and collaborates with various organisations for disabled people.

You are welcome to bring up an issue, to be examined, dealt with and responded to.

Find out more at: **sodertalje.se/handikapprad**

Pensionärsrådet

The Pensioners' Council is a forum for pensioners' organisations. The council provides an opportunity to put forward opinions about the municipality's operations and to suggest changes. To tell us your views on our activities, visit:

sodertalje.se/synpunkt

Find out more at: **sodertalje.se/pensionarsrad**

The Municipality of Södertälje is part of the Finnish administrative district

Swedes with a Finnish background are a national minority in Sweden, and Finnish is a national minority language. According to the Minority Act, the Finnish language must be protected and promoted and the Finnish minority in Sweden be given the opportunity to preserve and develop their culture.



As part of the Finnish administrative district, the Municipality of Södertälje has a specific responsibility to safeguard the Finnish language.

As a Finnish speaker, you have:

- The right to use Finnish in your contact with the municipality, and, on request, to have decisions and explanations translated, verbally or in writing, into Finnish
- The right to pre-school activities and elderly care services wholly or partially in Finnish.

In addition, pupils belonging to the Finnish minority in Sweden have an expanded right to teaching in their native language. The municipality also has a duty to inform the Finnish minority of their rights and offer scope for influence in issues concerning them. For this reason, the Municipality of Södertälje holds consultations where the Finnish minority is represented.

Did you know that...

Södertälje has a pre-school for Finnish speakers, Finnish classes at Stålhamraskolan and a Finnish-speaking accommodation block for dementia patients at Mariekällgården.

Contact centre – your gateway to municipal services

Do you need to apply for a pre-school place for your child, find out what compulsory schools or elderly housing are available in your local area or apply for planning permission? Your quickest option is to contact the municipal assistants at our contact centre. They can assist you with general issues and how to proceed to find a solution to your problem.

You can contact the municipal assistants at our contact centre with your questions by phoning +46 8-523 010 00, sending an e-mail to kontaktcenter@sodertalje.se, or calling in to Stadshusets entré (town hall entrance) at Campusgatan 26 and speaking directly to one of our 14 municipal assistants who work here every weekday between 08.00 and 17.00.

Nasif Kasarji is head of the centre and supervises the team, who are kept busy during opening hours dealing with queries ranging from how to find forms to apply for planning permission to how to apply for and find child care in your neighbourhood. Moreover, you can receive assistance in five different languages. In addition to Swedish, our assistants can talk to you in Finnish, Arabic, English and Assyrian/Syrian.

Better access for citizens

If the municipal assistants cannot answer your question, they will help put you in touch with the right person in the relevant department. On average, the contact centre receives 700-800 telephone calls per day, responds to around 50 e-mails and deals with



approximately 100 drop-in visitors. The queries vary with the time of year, but the most common is for assistance in finding pre-schools.

Since it first opened in 2014, the contact centre has become an essential element of the municipality's access for Södertälje residents in need of assistance and advice with general issues. In order to meet demand, more staff are needed.

– We often get positive feedback from the people who contact us and it feels good to be able to assist and be the municipality's public face. Our task is to serve local residents and we are doing so successfully, says Nasif.

In order to remain at the forefront and meet citizens' needs, the municipality is in the process of digitising more and more services to make it easier for local residents to deal with matters themselves. The municipality will also soon be launching a new chat function. This service will allow you to ask questions and receive a direct response from one of our staff at the contact centre. The chat service will be available during contact centre opening hours.

FACTS, CONTACT CENTRE:

The contact centre can provide services in Swedish, Arabic, Finnish, English and Assyrian/Syrian. You can submit queries by e-mail, phone, chat and social media, or drop by in person. The contact centre is LGBTQ-certified.

- **The centre is open to the general public:** Monday–Thursday 08.00–17.00, and Friday, 08.00–15.00. Closed weekends and public holidays.
- **Submissions,** decisions and messages/info to the Municipality of Södertälje should be sent to:
sodertalje.kommun@sodertalje.se
- › **Address:**
Campusgatan 26,
151 89 Södertälje
- › **Tel:** 08–523 010 00
- › **E-mail:**
kontaktcenter@sodertalje.se
- › **www.sodertalje.se/kontaktcenter**

Major focus on LGBTQ issues in Södertälje

All citizens should have the same rights, irrespective of sexual orientation, gender identity or gender expression. The Municipality of Södertälje is working actively on these issues and an increasing number of municipal operations are LGBTQ-certified.

The municipality's HR department has gained certification in 2017. The social youth field workers, anti-violence centre and men's clinic have begun the certification process. In 2016, the municipality's communication department and contact centre gained LGBTQ certification. The youth clinic in Södertälje was certified in 2012.

– The Municipality of Södertälje aims to be inclusive for everyone. LGBTQ issues have a self-evident place in our work to promote diversity. We work actively to improve awareness and knowledge regarding issues relating to the LGBTQ community, says Communications Manager Maria Dahl Torgerson.

The municipality's HR Director Johan Lefverström is proud of the HR department's LGBTQ certification:

– It's about the values we represent as an employer and what message we are sending to the outside world in our work on long-term skills provision. I see it as building on our distinct values within the municipality, he says.

A tool for working on equal opportunities

LGBTQ certification gives the employees a tool for working systematically on issues to



do with rights, equal opportunities, interaction and human rights. The focus is life conditions for LGBTQ individuals and norms in society. However, the training covers all causes of discrimination and is based on an intersectional perspective, i.e. how different forms of discriminatory power structures interact.

Södertälje's first pride parade

Other steps that have been taken in Södertälje to focus on LGBTQ issues is that the Swedish Federation for Lesbian, Gay, Bisexual, Transgender and Queer Rights (RFSL) has set up a local group in Södertälje. In May 2017, RFSL arranged Södertälje's first ever pride parade, with around 900 participants.

The parade started from Stora torget, where the Chairman of the Municipal Board Boel Godner (S) gave the inaugural speech, and ended outside the town hall, where the municipality hoisted the pride flag.



LGBTQ certification

RFSL (Swedish Federation for Lesbian, Gay, Bisexual, Transgender and Queer Rights) launched the LGBTQ certification scheme in 2008. Venues as diverse as the entire hospital, libraries, schools, swimming pools and health centres have completed the training. Any organisation at all can be certified. It is the organisation that is certified, not the individual participants. Therefore, all staff need to attend the course, which is led by an instructor from RFSL and takes place over around five months. Once the training is completed, a certificate is issued with stickers indicating that the organisation is LGBTQ certified.

What does LGBTQ mean?

LGBTQ is an umbrella term for people who are lesbian, gay, bisexual and transgender, as well as people who identify or express

themselves as queer. The 'L' and 'G' have to do with sexual orientation, i.e. the gender people are disposed to feel attracted to and fall in love with. The 'T' refers to how people define and express their gender. 'Queer' in this context can refer to sexual orientation, gender identity, relations and sexual practice, but it may also express a critical attitude to prevalent norms.

RFSL in Södertälje

RFSL has 30 local groups throughout the country and around 5,000 members. RFSL Södertälje is one of these groups. Here you will find information about the local group in Södertälje:

- facebook.com/rfslsodertalje
- sodertalje.rfsl.se

Källa: RFSL

Social youth field workers create a sense of security for Södertälje's young people

Our youth field workers in Södertälje are enthusiastic about their job: creating a sense of security for the city's young people. As a parent or guardian, you are the most important person in your youngster's life and the field workers' most essential partner.

Our youth field workers are part of the municipality's social services and employ a relationship-building and preventive approach in their work with young people.

Jakob Maximurad is group leader for Södertälje's six-strong team of field workers, and he says:

– If you want to talk to someone about parenthood or feel worried about your child, then get in touch with us. We have a duty of confidentiality and you can also provide information anonymously in the event of concern about a young person. If you and your child should get invited to a meeting at the school or recreation centre, they may ask if field workers should also be invited. We are happy to attend, if so, particularly if the young person requests it.

What our youth field workers do

In the daytime, the field workers build up relationships directly with Södertälje's young people in the municipality's compulsory schools in years six to nine. This involves both spontaneous visits, to meet and socialise with the pupils at breaks and in corridors, and planned classroom visit to introduce the organisation and explain who they are, how and when they work and where youngsters can reach them. If necessary, they talk about relevant themes, such



Henrik Kimsjö and Jennifer Melén are the contact field workers for Blombäckskolan, Brunnsängskolan, Fornbackaskolan, Igelsta Grundskola, Nyckelskolan, Rosenborgsskolan, Vallaskolan and Vittraskolan. **Rani Murad and Jakob Maximurad** are the contact field workers for Elafskolan, Hovsjöskolan, Kringlaskolan, Lina Grundskola, Ronnaskolan, Stålhamraskolan and Wasaskolan. **Gabriell Lidström and Jens Malmström** are the contact field workers for Eneskolan, Hölöskolan, Järna Friskola, Mariaskolan, Mölnboskolan, Oxbackaskolan, Pershagenskolan, Solviksskolan, Södertälje Friskola and Örjanskolan.

as bullying or alcohol/drugs, incorporating discussions or evaluation exercises.

In the evenings, they visit recreation centres, streets and squares, sports events, end-of-term events and other locations where young people hang out. In the holidays, the field workers arrange fun activities and excursions, so that more young people have the chance to do something enjoyable. Naturally they have their own Facebook page, where spontaneous activities are posted. Follow them at www.facebook.com/faltarna.sodertalje to be sure you don't miss out on any of the fun. Each youth field worker has a profile on Facebook, where they can receive messages from young people in need of advice or assistance.

– We are here to listen to the young people's thoughts and concerns about school, friends, relationships, alcohol and drugs or if they just want to get something off their chest. We want to be able to support everyone, irrespective of gender or sexual orientation. We have good language skills and can speak Arabic, Syrian, German, French, Spanish, Gotland and Skåne dialects, among others, continues Jakob.

Voluntary contact

All contact with the youth field workers is voluntary and all staff have a duty of confidentiality. As a young person, you should know that what is said will not go any further. However, if something is wrong, the field worker has a duty to report it. This means that everyone is obliged, under penalty of law, to contact the police or social authorities with regard to children under 18 years when serious criminal violence and great concern arises. This does not just apply when an actual crime happens, but can also apply to

suspicion that a crime is happening (a person with frequent bruises on their body or similar).

Two laws to comply with

The youth field workers have a duty of confidentiality. This means that if your child tells a field worker something in confidence, he/she must not repeat it to you, the child's friends or a teacher. This is in place to ensure that young people are able to trust the field workers, and a field worker must not abuse such confidence. Sometimes the field worker may need to talk to a colleague in order to provide your child with the best possible support, but everyone in the team has a duty of confidentiality to others.

The duty to report is the second law that must be adhered to. This comes into play if there is concern that your child is at risk of harming themselves or someone else due to a bad situation. In this instance the field workers (just like teachers, counsellors and youth recreation leaders) are obliged to ensure that the young person receives more help than they can provide. Sometimes it is sufficient for you as guardian to be informed about what has happened, so that you can provide support, or concerns can be reported to social services. Before any report is made, the field workers always inform the young person, if they can, that a report is to be submitted, so that they can be involved and have a say in how and when this is done.

Activities to create a sense of security

Södertälje is home to around 9,000 young people aged 12 to 18 years. Jakob Maximusrad and his five colleagues in the field activities team are employed by the municipality to create a sense of security for our young people. The field workers primarily

focus on youngsters aged 12-18, but if anyone just outside this age bracket approaches them, they are there for them too. There are 27 compulsory schools in the Municipality of Södertälje and the field workers plan visits during term time when they go round the classes and introduce themselves. Above all, working with, and being there, for young people requires commitment and enthusiasm. A youth field worker needs to be a good listener, to be able to support change processes and a willingness to work at individual, group and community level. In order to become a youth field worker, a relevant university qualification is generally required, for example, social worker, social educationist, behavioural scientist or treatment assistant and at least a couple of years' experience of working with young people.

LGBTQ certification

In spring 2017, the whole team received training in LGBTQ issues (lesbian/gay/bi/trans/queer) and was certified by RFSL in autumn. The work was intensive – learning facts about LGBTQ issues and developing our activities and interaction so that more people feel included and seek support from the field workers. Every person is valuable and has the right to be who they are. These are important issues for our youth field workers.

Get involved – join the night patrol

As a parent/guardian of one or more teenagers, we recommend joining the night patrol in your residential district. This provides a good opportunity to get to know other adults, build confidence among the youngsters and contribute to a safer environment for them. Find out more on the municipal web page: www.sodertalje.se/nattvandring

Together for democracy

The Municipality of Södertälje has a democracy committee, with politicians from all parties on the Municipal Board. It has three clear mandates, and one of them is to get more citizens to vote in the general election in September 2018.



At the last general election in 2014, turnout increased in Sweden – but fell in Södertälje. Turnout differs between different residential districts in Södertälje, in some districts it is well below the national average. In light of this the Municipal Board decided to set up a democracy committee in 2015. It is made up of one representative from each party on the Municipal Board: Centre Party, Christian Democrats, Liberals, Green Party, Moderates, Social Democrats, Sweden Democrats and Left Party.

When the democracy committee meets, party-political opinions are set aside and the politicians work for a common purpose: To develop and strengthen democracy for the whole of Södertälje and all Södertälje residents.

The democracy committee has three clear mandates:

- To increase engagement among the municipality's citizens. The priority is work with children and young people in the municipality so that their voices are heard and given greater influence in

political decisions and initiatives.

- To develop the forms of citizen dialogue.
- To increase turnout in the 2018 election.

Increasing democracy and engagement among Södertälje's citizens is a major and important task. As a municipality, we cannot solve this alone. All forces for good in the community need to work together: civil society, clubs and societies, the business sector, educational associations and various religious communities.

Lunchtime discussions in schools

This year we are developing a strategy for democracy work. This plots a direction for how the municipality aims to develop and strengthen democracy and increase scope for influence from citizens.

During the work of formulating the strategy, several community discussions have been organised, where Södertälje residents get to give their opinions and put forward suggestions for how we as a municipality can be better at working on issues relating to democracy. The politicians on the democracy committee also hold lunchtime discussions in schools to talk to pupils about democracy. Issues that have been discussed include: what can the municipality do to help young people make their voices heard, what forms of influence do you think are good, e.g. social media and meetings?

Another important activity that the democracy committee has been involved in during the year is applying for funds to set up a forum for democracy in Hovsjö. In May came the good news that the application had been granted, and Hovsjö Forum is now a reality.

Find out more about the work of the democracy committee online:

- www.sodertalje.se/demokrati

2016 IN FIGURES

- **94 631** people live in Södertälje.
- **32,23** percent – the tax rate in the Municipality of Södertälje.
- **39,2** years – the average age.
- **7 032** people moved to Södertälje.
- **1 145** children were born in Södertälje.
- **Approx 80** languages spoken.
- **86** lakes in the municipality.
- **707** islands.
- **17** municipal compulsory schools.
- **7 402** registered companies in 2016.
- **630** businesses are set up every year in Södertälje.
- **48 758** jobs in Södertälje.

HOW EVERY SEK 100 IN TAX WAS USED IN 2016:

- Compulsory schools SEK 22,73
- Initiatives for people with disabilities SEK 15,33
- Care for the elderly SEK 12,07
- Child care SEK 10,97
- Upper secondary school education..... SEK 7,94
- Social initiatives for children, young people and adults SEK 6,07
- Income support SEK 5,40
- Other activities SEK 3,76
- Libraries, culture, leisure activities SEK 4,08
- Surplus for the year SEK 7,88
- Streets, roads and car parks... SEK 1,40
- Adult education SEK 1,57
- Emergency services and protection SEK 0,89
- Parks and nature areas..... SEK 0,68
- Environmental and health protection..... SEK 0,16
- Labour market measures... SEK -0,93

The city and the four municipal districts

The Municipality of Södertälje consists of the city and the four municipal districts of Järna, Hölö-Mörkö, Vårdinge-Mölndö and Enhörna. This section explains how the municipal districts function and what services they are responsible for.

By law, the municipality is responsible for child care, schools, adult education, Swedish for Immigrants (SFI), care for the elderly and people with disabilities, housing, water and drains, refuse collection, street-cleaning, emergency services and libraries.

In addition to this, the Municipality of Södertälje also takes responsibility for music and arts schools, recreational and cultural activities, reception of refugees, consumer advice, park maintenance, and forest and nature conservation.

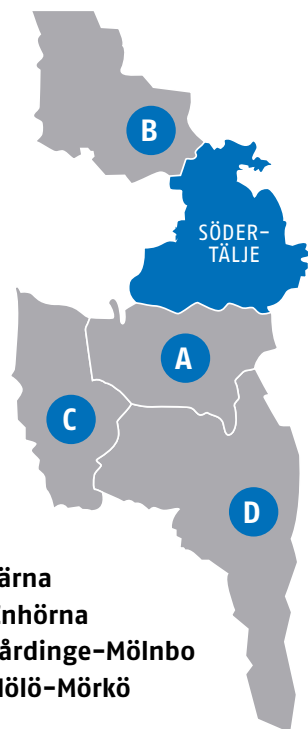
For democracy, insight and influence

Having multiple municipal districts allows us to strengthen and develop local democracy. Your scope for having an influence in your own local area increases. Each municipal district has a municipal district committee made up of elected politicians who meet once a month. All their meetings are open to the general public, except when certain confidential matters are being discussed.

For information about when your municipal district committee meets, visit: sodertalje.se/namnder

What the municipal district committees make decisions on

In your municipal district, the committee makes decisions about pre-schools, compul-



- A. Järna
- B. Enhörna
- C. Vårdinge-Mölndö
- D. Hölö-Mörkö

sory schools, care services for the elderly, local leisure activities and libraries. There is also a technical administration department that looks after parks, local roads, etc.

JÄRNA (A)

Everything is within easy reach in Järna. The centre features a selection of shops and restaurants, while at the same time both the sea and forest are close at hand. You will also find the anthroposophist community and several companies focusing on locally-grown produce and organic farming, e.g. Saltå Kvarn. Perhaps the best-known attraction is the anthroposophist community at Ytterjärna and its arts centre that hosts music, dance,

theatre, film and art events. Other sights and attractions include Vattgruvsmossen nature reserve, a magical and extensive bog surrounded by coniferous forest, and Farstanäs, a popular swimming spot with a large campsite.

Transport services

It is easy to commute to and from Järna. The commuter train station and the bus station are adjacent to the centre. The E4 motorway passes just outside Järna.

The future and development

Urban feel in Järna. There is great demand for housing in Järna and private land-owners are developing and exploiting several areas. The municipality wants to create a more compact small town with a more urban feel, according to the detailed layout plan for Järna population centre. Both detached houses and apartment blocks are planned in Kallfors. Along Rönnvägen, on a level with Ljungbacken, Boklok is planning to build cooperative housing. The development process in the centre of Järna was launched in 2015 following a community discussion with local residents.

ENHÖRNA (B)

Enhörna is often referred to, somewhat romantically, as “cherry country”, owing to its abundance of cherry trees. It is situated on a beautiful peninsula in Lake Mälaren, north west of Södertälje. It is a thriving agricultural district, and also boasts forestry operations. There are good bus connections, and most local residents commute to workplaces in Södertälje or Stockholm. The biggest population centre is Ekeby.

Boating and swimming

During the summer months, steamers run

services to Stockholm, Mariefred and Birka from the jetties at Sandviken and Ekensberg. The area around the steamer jetty in Sandviken is popular with windsurfers. There are two excellent swimming spots: the shallow Underåsbadet with its volleyball court and marina, and Nya Malmsjöbadet.

Friluftsgården

Friluftsgården is a self-contained facility with several grass courts and an artificial grass pitch, a number of running tracks and a small outdoor gym. Ski trails and an ice rink are set up in winter. In September, Enhörna IF organises a market with stalls and booths, and Walpurgis Night is marked by a communal celebration including bonfires for both children and adults.

The future and development

The summer cottage area in Sandviken is a popular area in Enhörna, which the Municipality of Södertälje wants to develop. Many people have already settled there permanently. There are also plans to develop several neighbouring areas. A new road between Ekeby Gård and Sandviken is proposed. We also have a long-term plan to lay on water and drains all along its length out to Sandviken and to build a new compulsory school.

VÅRDINGE-MÖLNBO (C)

Vårdinge-Mölnbo, with its chief town of Mölnbo, is the smallest municipal district in Södertälje and the ideal place for anyone looking to live in a delightful, rural environment, yet still within easy reach of your work.

Mölnbo is only 25 minutes by commuter train from Södertälje, and a further 45 minutes from Stockholm. Natural meeting places in-

clude the combined shop/restaurant and the school. The Bergabadet outdoor swimming area is open in summer, with the Södermanland hiking trail nearby. Sports enthusiasts will enjoy the facilities at Mölnbo IP, with its football pitch and adjoining illuminated trails. Vårdinge-Mölnbo is home to an active selection of clubs and societies.

The future and development

In central Mölnbo is the Skolbänken block, also known as Wennobotomten. This property is owned by the municipality. Together with a private developer, the municipality intends to develop the property to provide 30 homes. The area lies along route 57 within walking distance of the commuter train station.

HÖLÖ-MÖRKÖ (D)

The archipelago, the sea, fields and forest are dominant features right across Hölö-Mörkö. In recent years many people have moved here and several residential areas have been built. This is the southernmost municipal district in Södertälje, and comprises the population centre of Hölö, the rural area and the archipelago, including the islands of Mörkö and Oaxen.

Attractions on Mörkö include Idala summer café and Skansundet marina with its restaurant, campsite and herring fishing in spring. Most people live in Hölö, from where there are direct bus connections to Södertälje. In addition, the E4 motorway passes just to the east of the community.

Tullgarn Palace

During the summer months, many people head out to Åbynäsbadet swimming area, and for boat owners there are two clubs: Åbynäs and Oaxen. Tullgarn Palace, King

Gustav V's favourite residence, is located in southern Hölö, surrounded by picturesque Södermanland countryside. It is one of the most popular visitor destinations in the Municipality of Södertälje.

Sports facilities

This municipal district has two sports facilities: Hölö IP and Mörkö IP. It is home to several clubs and societies, including Hölö-Mörkö IF and a riding club. The town of Hölö has a multi-activity hall housing a sports hall, aerobics hall, mirrored hall, shooting range, café and a recreation centre. The premises are used for basketball, football and volleyball, among other sports. They also host aerobics, theatre, dance, shooting and recreation centre activities.

The future and development

A large number of homes have been built in Hölö-Mörkö in recent years. With a beautiful archipelago, the sea close by, a rural setting and good transport links to the population centre and other communities, this is an attractive area and, consequently, many people choose to move here.

The Wij district is in the community of Hölö. In the long term, the Wij district could be developed with a variety of dwellings and forms of tenure. Telge Bostäder has already built some rented apartments in the area. Ostlänken (East Link) is part of future plans for high-speed rail travel in Sweden between Stockholm, Gothenburg and Malmö. Ostlänken is the section between Järna and Linköping. The planned start date for construction of the new railway in the Municipality of Södertälje is 2019. The projected completion date for Ostlänken is 2028. The planned route will pass west of the E4 motorway at Järna junction and east of the E4 at Hölö junction.

A good start in life

Södertälje is home to almost 20,000 children under 18 years of age. Some were born in the municipality, while others have moved here from elsewhere. A variety of cultures come together here, with differing backgrounds and experience, but one common denominator – school. Schools are crucial for success, and are a task we take very seriously. Schools are priority one, two and three in Södertälje.

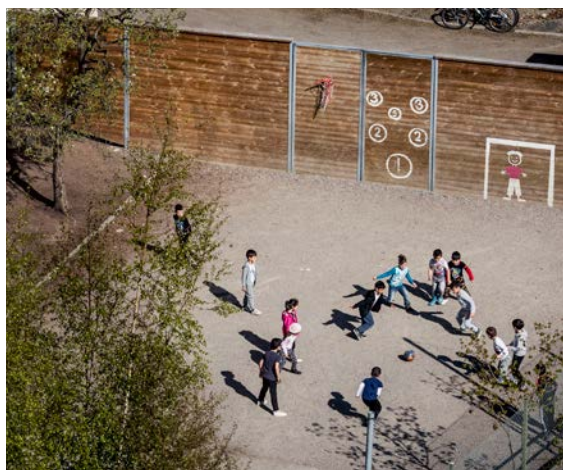
Södertälje's schools have shown improved results for several consecutive years. This is thanks to systematic quality work that permeates all teaching. We monitor all pupils' knowledge in all subjects several times a year. We know from an early stage how pupils' knowledge is developing and can subsequently adapt the teaching.

We will continue to develop our schools. Our focus is knowledge, order and system and ensuring that Södertälje's schools are part of re-establishing and advancing the education tradition in Sweden.

Elof Hansjons (S),
chairperson of the education committee

Pre-schools

Södertälje has 75 municipal and independent pre-schools that together contribute to educational diversity. The municipal pre-schools have a common operational concept inspired by the Reggio Emilia educational philosophy. This is a philosophy that is constantly being renewed and developed, with the needs of the child as its starting point and in step with



the rapid rate of change in modern society. An inquisitive, exploratory working method where the children's thoughts, ideas and imagination form the basis for the learning process. The independent pre-schools in the municipality have differing approaches, everything from the 'rain or shine' concept to a scientific profile. Södertälje has a pre-school for everyone!

► 75 pre-schools

► Educational diversity

► Approaches:

- Reggio Emilia philosophy
- Waldorf
- Bornholm model
- Kristen profile
- Finnish language profile
- Rain or shine
- Scientific profile

Compulsory schools

Södertälje has 27 compulsory schools, 10 of which are independent. In August 2018, an additional municipal compulsory school, Viksbergsskolan, will open, along with a new independent compulsory school, when the English School opens its doors in

Södertälje. Together, Södertälje's compulsory schools provide a broad selection of education and approaches. All municipal schools and pre-schools in the Municipality of Södertälje have a shared model for systematic quality work. As a result, Södertälje's schools have shown continually improved merit values.

- **27 compulsory schools, of which 10 independent**
- **Highest merit value 256.8**
- **KRAV-certified school canteen with 60 percent organic food (municipal schools)**
- **Language-development method**
- **Two teacher system**
- **International education**
- **Lead teacher**
- **Approaches:**
 - Montessori
 - Rain or shine
 - Sport and music specialisation

Upper secondary schools

Skills for the future are taught in Södertälje. Education that gives pupils the capability to analyse, collaborate, communicate, critically review and take initiative. Södertälje has five municipal and seven independent upper secondary schools. Together they offer a wide range of educational options with skilled and qualified teachers. Welcome to Södertälje's upper secondary schools!

- **Five municipal and seven independent**
- **Approaches:**
 - University foundation programme
 - Vocational programme
 - IB – International Baccalaureate diploma programme
 - NIU – nationally approved sports programme (elite sports in school hours)
 - Introductory programme
 - Upper secondary special schools

■ LIVE AND WORK

Living in Södertälje

We're not building a city like all others – we already have a great city! But we want to make it even better. In Södertälje it's easy to get around by public transport to and from the city centre, and also within the municipality. Our city is home to a number of major employers, and you have every opportunity to get active in your leisure time.

We are working with Södertälje Centrum-förening and property owners through the project entitled 'Södertälje city – i samverkan' (SCiS) to develop the city centre and to create a setting where residents and visitors alike can thrive and feel secure.

A city where people thrive is filled with meeting places and street life – and one way to ensure this is to give more people the chance to live close to the centre. The first major housing project behind the old town hall on Stora torget has now been completed and opened.

Just a stone's throw from there is Orionkullen – where ByggVesta is to build around 70 rented apartments with 1,100 m² of shop units on the ground floor. The municipality is also planning other rented and cooperative apartments together with developers, both in the city centre and just outside. There are, of course, many other forms of housing in the population centre: terraced houses and detached houses, for example, in some of our more family-oriented districts outside the city centre.

■ HOUSING

There are approximately 22,000 rented apartments in Södertälje. Telge Bostäder, the muni-

cial housing company, owns around 9,500 of these apartments, which are available via its residential waiting list. Telge Hovsjö has 1,660 apartments. There are also several private landlords. The municipality website has links to estate agents and housing companies.

Södertälje is growing

Södertälje is growing, and its population expanding. Here are some of the areas in the municipality where new housing is being built: Stora Ritorp and Björkmossen in Ritorp, Ekgården in Ragnhildsborg, Kaxberg in Lina hage, Glasberga and Kallfors in Järna. Building is taking place in Bergviks strand in central Södertälje.

Plans are also being drawn up for future housing in the following areas: near Wendela Hebbevillan, at the Nygatan/Badhusgatan intersection, Bårstafältet, Hovsjö, Kanalstaden, Igelsta strand, Södertäljeporten in Grusåsen and Båtvarvet in Pershagen.

Other sites where construction is planned include north of Ekeby and Sandviksvägen in Enhörna, the Wij area in Hölö, Wennebotomten in central Mölnbo and Örnstugan in Ragnhildsborg.

■ EVERYDAY LIFE

There is plenty to do if you live in Södertälje. City life is characterised by culture and sport. We are planning to build a multi-hall facility near Södertälje hospital. Multi-use sports grounds can be found at Ronna and Brunnsäng. At Kusens Backe, near Östertälje IP and near Tveta open-air recreation centre are outdoor gyms and close to Sydpoolen swimming pool is a parkour and skatepark. In addition, the town has a busy library and an excellent large stage, Stadsscen.



Shopping

Södertälje city centre has a wide range of shops and restaurants. You will find large well-known chains alongside smaller shops. Kringlan, Telgehuset and Lunagallerian are three central shopping centres along the main pedestrian street. Not far from the centre, close to the northern approach to Södertälje from the E4 and E20 motorways, you will find Moraberg retail park with its well-known and popular stores selling sports and leisure equipment, furniture, and items for the home and garden. There is also free parking for more than 500 cars. And Moraberg is now expanding beside the motorway slip road towards Stockholm, on the other side of Moraberg's shopping

centre, with two large stores, Ica Maxi and Biltema. Once these have opened, the retail centre may expand even further.

Weda retail park is home to a mix of companies from a variety of sectors – everything from office companies to B2B businesses. Superstores Willys, Lidl and ICA Supermarket are to be found here. Weda shopping centre itself houses outlets selling toys and baby goods, sports and leisure equipment, pharmacy and health products, textiles, antiques and curios.

Vasa retail park, near the south-western approach to Södertälje from the E20 motorway, is the biggest out-of-town shopping centre in the region, with well-known stores selling groceries, furniture/home furnishings and more. These include Coop Forum, ICA Maxi and Mio möbler. There is also free parking for more than 1,200 cars.

Travel

Södertälje enjoys a strategic location in both the Mälardalen and Stockholm regions, and serves as a hub for national, regional and local public transport networks. The municipality provides excellent bus services and also has a comprehensive network of cycle paths. It is simple to travel to and from the municipality as well; for example, there are commuter train services to and from Stockholm every 15 minutes during the day. The infrastructure in the region is well developed, including the E4 and E20 motorways and both regional and intercity train services calling at Södertälje South.

Large vessels sail along the canal, passing the city centre on their way to and from Lake Mälaren, while the port of Södertälje handles goods traffic. There are three airports nearby – Stockholm Skavsta Airport to the south, and Bromma Airport and Arlanda to the north.



■ EXERCISE AND HEALTH

Good health, on equal terms, for everyone in Södertälje

Sustainability for people is just as essential as sustainability for our environment. It is widely known that the population of Sweden – companies, the state and municipalities are working and contributing to saving the earth's resources. We recycle and re-use and are cutting down on use of energy, water and fuel. But the fact that we are aiming to improve sustainability for the population is not so widely known.

The Municipality of Södertälje has been working for a few years on a public health programme for improved social sustainability to improve health and lifestyle habits. This means that all the municipality's operations such as schools, care and welfare services and city and transport services should keep public



health in mind in their work. For greater impact, the municipality is also working with large companies in Södertälje such as AstraZeneca, Scania and Södertälje hospital. Good living conditions, healthy lifestyle habits, a good environment, good working conditions, mental health and joint efforts relating to public health are six target areas for which the public health programme suggests activities over the coming years. The target groups are children and young people. The Municipality of Södertälje as an employer aims to be a role model and is currently proceeding with a three-year project to promote good working conditions.

How do we achieve our objectives?

Working on public health involves working on social sustainability. The Municipality of Södertälje is working actively on sustainability issues. Some examples of what the municipality is doing and planning to improve include giving all residents the right to good lifestyle habits by expanding the number of cycle tracks, outdoor gyms and multi-use sports grounds. For a good environment, access to green areas can be increased, while for mental health, schools and pre-schools can work on identifying mental health problems.

THE PUBLIC HEALTH PROGRAMME (2015–2018)

proposes activities to fulfil six target areas:

- › good living conditions
- › good lifestyle habits
- › good environment
- › good working conditions
- › mental health
- › joint efforts relating to public health

The municipality's outdoor gyms:

- › Kusens Backe outdoor gym
- › Tveta open-air recreation centre
- › Östertälje outdoor gym
- › Brunnäng

MULTI-USE SPORTS GROUNDS:

- › **Klättringssvampar**
sodertalje.se/klattringssvampar
- › **Brunnsäng**
sodertalje.se/brunnangspontanidrott
- › **Ronna**
sodertalje.se/ronnaspontanidrott
- › **Skateparken**
sodertalje.se/skatepark
- › **Parkourparken**
sodertalje.se/parkour

For more information and activities, visit the municipal website.



Södertälje – a competitive city

Södertälje is part of the Stockholm region, which ranks as one of the most competitive regions in the world. With its strategic location for land, sea and air transport, Södertälje is a city with good prerequisites for a unique and beneficial business climate.



Södertälje is characterised by an advanced manufacturing industry, including two leading international companies in Scania and AstraZeneca. In all, they have just over 14,000 employees. The rest of the business sector in Södertälje is also strongly competitive, primarily within construction, retail, foodstuffs, tourism industry and corporate services.

The future for Södertälje's business sector looks bright; both large and small companies are investing in expansion and development in Södertälje. The number of employees at limited companies is increasing and growth in profitability among these companies is almost double the national average.

The geographical location, with two European motorways, a port, a canal and proximity to airports, makes Södertälje an attractive place for companies to set up and people to live and work. Södertälje is one of four municipalities in the County of Stockholm with a larger daytime than night-time population. Every day, 21,599 people commute to jobs in Södertälje. The number of people commuting from Södertälje for work is 15,071 (these figures are from 2015).

Third largest labour market

There are over 7,400 companies in Södertälje. In the last year, 630 new companies were set up. During 2016, Södertälje's labour market employed 48,758 people, and it is the third largest labour market in the County of Stockholm.

Södertälje is a centre for southern Stockholm's business sector. It accounts for 35 per cent of all employment with limited companies within Södertörn's municipalities (figures from 2014).

Södertälje Science Park

Södertälje Science Park (SScP) was founded in 2016, to contribute to strategic work to tackle regional challenges involving: sustainable production, skills provision and growth. This is achieved through the business sector, academia and the local community working together. Södertälje Science Park aims to help make Södertälje an even more knowledge-intensive and expansive place in the southern Stockholm region.

Södertälje is growing

Södertälje city is intended to be twice as big and the city centre more densely developed from Södertälje Centrum commuter station to the Science Park. It should be possible for more people to live in the centre. The municipality's plan is to build 20,000 homes within 20 years.

– There is great interest in building and living in Södertälje and we already have a large housing shortage deficit. We need to make huge efforts to ensure we don't end up even more behind, explains Magnus Bengtsson, chief project manager at the Staff and Strategy unit.

The municipality primarily wants to further develop the city, but the rural areas will also expand, with Enhörna, Järna, Hölö and Mölnbo growing over the next few years to help solve the social situation in the municipality due to the acute housing shortage. However, it is not quite as simple as just building loads of houses. Planning is also needed for municipal services such as pre-schools, schools and housing for the

elderly and facilities such as roads, water and drainage systems.

Views from citizens

It is important for citizens to be involved in the process and put forward their views; changes and development are being implemented for their sake. All construction projects have a phase during the planning stage when citizens have the chance to put forward their views. If you miss this and respond later in the process, it is more difficult to gain a hearing.

The business sector is growing

Besides the fact that Greater Stockholm is growing, Södertälje's business sector and industries are also expanding. AstraZeneca is intending to build a new plant in Södertälje for manufacturing biological pharmaceuticals, an investment that will create 150-250 new jobs up to 2019. Scania is hoping to lead the way within sustainable transport with the new generation of lorry launched last year. In addition to this, alterations and expansion of the hospital will soon be complete and Snäckviken with Södertälje Science Park, Campus Telge and KTH.



Södertälje city – working together

We don't need to build a city, like most other municipalities in the Stockholm region – we already have a great city that we want to make better. In order to make this possible, the Municipality of Södertälje and Södertälje Centrumförening, traders and property owners launched a joint project in 2014 to develop the city centre “Södertälje city – i samverkan”.

In discussion with local residents, the project aims to drive development of the city and market the destination of Södertälje as an attractive place to live, study and work. The joint project is intended to ensure greater reciprocation of input and provide a safer city. Some examples of successfully-implemented projects include Södertäljefestivalen (previously known as Kringelfestivalen) and other events such as the Walpurgis Night celebrations and Black Friday. One future objective is for Södertälje to win the City Centre of the Year award.

Safety in the municipality

The municipality is continuously working to improve safety and to improve locations perceived as unsafe. New projects are implemented every year, and in 2017 it was the turn of the town hall tunnel to be made safer, with new lighting and a fresh coat of paint.

Pedestrian zone

Regeneration and expansion of the pedestrian zone in Södertälje links up the city centre from Stora torget to Saltsjötorget. Development and extension of the pedestrian zone is fully complete and it now provides an attractive pedestrian boulevard running right from



Saltsjötorget to Stora torget. The entire pedestrian zone has been given a complete facelift and provided with new street furniture, new lighting and new trees as well as wheelchair ramps to improve access to properties containing shops or restaurants.

The improvements to the pedestrian zone were carried out in two stages. First up was the northern section, which was completed in 2014, followed by extension of the southern section, completed by the end of 2016. The new section of the pedestrian zone runs along Järnagatan from Badhusgatan up to the intersection with Nygatan, where Saltsjötorget is located. This portion is a so-called walking speed area, which means that pedestrians have priority over other traffic.

Why should Södertälje city be more densely developed?

The entire Stockholm region is growing and more housing is needed. Expansion of Södertälje's city centre will create a good basis for achieving an attractive city district where many people want to live and work. The proximity to Södertälje Science Park and the new KTH Campus is an advantage for



attracting new residents to Södertälje. The area is intended to be a natural part of the existing city centre and provide space for 1,400 new residents.

Background to the project to expand the city centre

The high level of interest in building housing in Södertälje continues. In 2016, 1,442 building permit cases were submitted to the municipality, which is 3 per cent more than in 2015 and there is no sign of this level of interest abating. Residents' perceptions of Södertälje, as a place to live and work, have improved in the latest residents' survey. The municipality has invested the public tax money in improving playgrounds, parks, street lighting and car parks, which will benefit all citizens.

Democracy for development

Politicians, civil servants and artists have held discussions with residents to determine how they want to see culture being developed in the city centre. Several thousand suggestions were received about what culture means to our residents, what they feel is lacking and what they want more of. Discussions have

also taken place with young people, about a future activity park at Slusssholmen and Lot-sudden, among other topics. What they want to experience and do in a future activity park. Other matters that young people have given their opinions about are the development and what they want from the northern area of the city centre and the zone from Stora torget through to Södertälje Science Park.

How does the future look?

The municipality and the project "Södertälje city – i samverkan" are continuing to develop the city centre through construction of homes and linking together pedestrian and cycle routes. Traffic and transport in the city centre is being reviewed. A traffic strategy for the municipality is being formulated, among other things. In addition, a parking strategy for the city centre has been developed. The municipality is also looking at safeguarding school routes to and around schools. The objective is to improve well-being in the city centre and for more people to want to settle, study or set up new businesses in Södertälje.

Ongoing projects in the city centre:

It should be a vibrant city centre – with more natural and open meeting places the city centre should be more vibrante.

- **Sustainable transports** – The Municipality of Södertälje aims to be a fossil-fuel-free organisation in 2017, but still has some way to go. A project for coordinated distribution of goods has halved carbon dioxide emissions.
- **More housing** – 20,000 new homes are to be built up to 2036.
- **More compact development and linking the city together** – the city centre is growing, with expansion of its northern area.



REMODELLING OF SÖDERTÄLJE CANAL AND LOCK IN FULL SWING

In spring 2016, the Swedish Maritime Administration began remodelling Södertälje Canal and lock. The Mälaren project (Mälarprojektet) is expected to be completed in Södertälje in 2019.

There is a great deal of activity under way around Slussholmen and Lotsudden in central Södertälje. Large machinery is at work inside the fenced-off working areas, certain traffic diversions are in operation and occasional noise is heard. The Swedish Maritime Administration is responsible for the work. The government has decided that the safety and navigability of the waterways through the Södertälje Canal and Lake Mälaren need to be improved. The “Mälaren project” involves improving access to harbours in Lake Mälaren and improving maritime safety.

New lock to be built outside existing lock
Södertälje lock and canal are currently being adapted to be able to accommodate longer and broader vessels. Sheet piles will be driven in to reinforce the banks of the canal, i.e. to hold the soil in place. The channel will then be widened below the surface of the water by dredging. The new lock is being built outside the existing lock, so that the lock can remain in operation during the construction process. Once the new lock is completed and in place, the old lock will be dismantled.

A walkway is being planned for the new lock gate upstream, while a new lock bridge will be built adjacent to the southern end of the expanded lock. This bridge will feature a traffic lane in each direction, as well as a pedestrian/ cycle lane.

New asphalted footpaths and cycle paths
The Swedish Maritime Administration will also construct new asphalted footpaths and



cycle paths along the full length of the eastern bank of the canal and along large sections of the western bank. They also plan to build two bridges across to Kanalholmen.

Once the Swedish Maritime Administration has finished remodelling the Södertälje Canal and lock in 2019, the municipality can start work on an activity park at Slussholmen and Lotsudden.

MORE INFORMATION

The Swedish Maritime Administration is responsible for the work of remodelling the canal and lock in Södertälje. You can find more information on their website, where you can follow the progress of the project, read news, newsletters and watch films:

► www.sjofartsverket.se/malarprojektet

ACTIVITY PARK AT SLUSSHOLMEN

Swimming, playing boules, listening to music and “fika”. These are some of the suggested activities that local residents would like to see at the future activity park at Slussholmen and Lotsudden.

The “Mälaren project” will involve the municipality taking over the Swedish Maritime Administration land at Slussholmen and Lotsudden. Once the Swedish Maritime Administration has finished remodelling the Södertälje Canal and lock, sometime in late 2019, the municipality can start constructing the activity park there.

We have ensured civic participation, with local residents being given the chance to tell us what they would like to see in an activity park. We have received more than 600 different suggestions. They include: listening to music, going to an amusement park, outdoor

gym, park with statues, café, a beach, playground, for small boats to be able to come into inner Maren, for Slussholmen to be traffic-free in the future...

"Slussholmen's development is part of the development of the Maren district. The project is currently in a phase where we are investigating what might be possible for the site based on the views put forward in the community discussions. The entire area needs to be coherent and function as a whole, so this is an exciting challenge," says Annelie Johnson, project manager for the Maren district.

Södertälje's new arena of the future

Södertälje Science Park (SScP) is an international collaborative environment for research, innovation and education within sustainable production, life sciences and sustainable food, and is located in Snäckviken in the northern area of Södertälje city centre. Here the business community comes together with academia and the local community to conduct research and development projects. 30 January 2018 will mark the opening of Södertälje's new arena of the future for specially-invited guests. In connection with this, a Science Week event is to be held from 31 January to 4 February, for anyone with an interest in research, development and innovation.

At the start of 2016, ground was broken on the construction of new premises for Södertälje Science Park and KTH. The official opening of the premises in January 2018 will give KTH a total of 1,200 university pla-



ces in a brand-new building and in a converted property in the northern area of the city centre. It will include a brand-new engineering course as well as research posts that have been jointly planned between KTH and companies Scania and AstraZeneca.

Södertälje's two major companies, Scania and AstraZeneca, are working closely with the municipality, property company Acturum and the Royal Institute of Technology



(KTH) to develop Södertälje Science Park, in the hope of creating new jobs, companies and education programmes. Acturum Biovation can be found here, with around 40 research companies within life sciences. Södertälje hospital has a number of active researchers at the park, and both the research institute SP Process Development and Scania IT have operations on site. Located in Gärtuna, Swetox (Academic Research

Center for Chemicals, Health and Environment) is a unique centre for education and research focused on chemicals, health and the environment. The Södertälje Science Park venture is the initiative of eleven Swedish universities.

Campus Telge, which offers college courses via distance learning in collaboration with several colleges in Sweden, is also represented on site along with SFA Medicin and courses taught by Folkuniversitetet and vocational colleges. The site is also home to entrepreneurial organisations such as Uppsala Innovation Center, Nyföretagarcentrum, Drivhuset and Connect as well as UIC Södertälje and Coompanion. The area has a restaurant and café. Directly adjacent is one of AstraZeneca's production facilities and Tom Tits Experiment.

The aspiration to reduce environmental and climate impact in combination with health aspects is driving demand for sustainable food, particularly in the densely-populated Stockholm region. One initiative in the high-profile field of sustainable food is 'MatLust', a five-year EU project intended to boost growth and sustainability in the food industry in the Stockholm region. MatLust offers free development programmes, activities, networks and other forms of support for small and medium-sized enterprises. Through the Södertälje Science Park initiative, of which MatLust is a part, Södertälje is set to become a knowledge centre and a creative meeting place for food and sustainability. Södertälje Science Park represents the future and development for Södertälje. It is important both to the local business community and to Sweden as an industrial nation.

- www.facebook.com/sodertaljesciencepark
- www.sscp.se







Södertälje has a great deal to offer

■ Södertälje is a place where ideas have been born and where people have met and traded for over a thousand years. Södertälje remains a melting pot of cultures and traditions. It is a city with a pedestrian zone, a canal and a vibrant centre. The Tom Tits Experiment centre, world-class sport, a marina in the heart of the city and fascinating cultural facilities are also to be found here. And on the doorstep, inviting Södermanland countryside opens up in all directions.

Our Södertälje is a brochure for anyone keen to find out more about Södertälje. No matter whether you have lived here all your life, or have recently moved here from another town or city, or even from another country, there is a great deal to explore and discover. Our Södertälje also contains information about what the Municipality of Södertälje has to offer, and how you can have an influence and make your voice heard.

A warm welcome to Södertälje!

The Municipality of Södertälje, SE-151 89 Södertälje, Sweden. Tel. +46 8-523 010 00, sodertalje.se

